

HIGH PERFORMANCE Thermal Management

023-MXQ-01 Liquid Cooled Coldplate

The 023-MXQ-01 is a liquid cooled coldplate specifically designed for challenging power density applications requiring a compact and light-weight design. The advanced design of the 023-MXQ-01 allows for efficient heat transfer between the coldplate contact area and the power module base plate.

Compatible Power Module Packages

- ABB LinPak
- Fuji Electric HPnC M288/M292
- Infineon XHP™
- Mitsubishi LV100/HV100

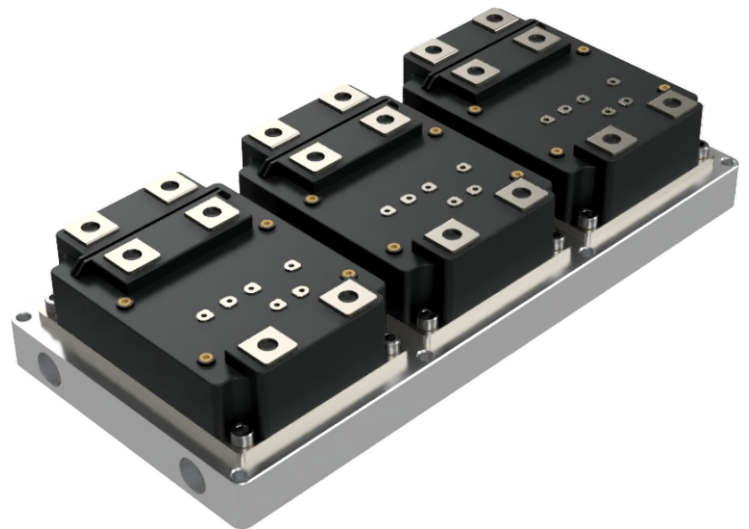
Applications

- Rail Traction Systems
- Locomotive & High Speed Trains
- Industrial Medium Voltage Drives
- Marine Thruster Systems
- Heavy Vehicle Wheel Drive Systems
- Power Transmission and Distribution
- Autonomous Vehicles
- Defense Vehicles

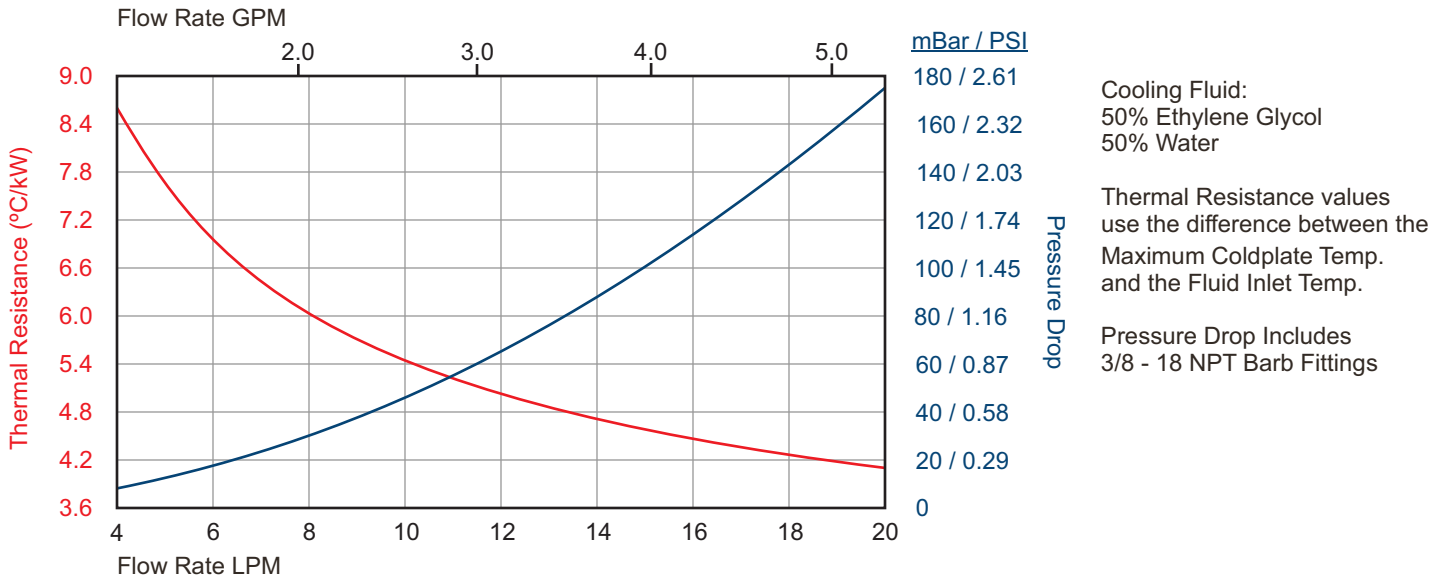
Features

- 6000 Watt heat rejection @ 16 LPM with a 26° C temp. rise from the fluid inlet to the max coldplate temperature
- Patented PWR-CHILL internal fin technology provides for a more uniform top coldplate surface temperature
- Low pressure drop for reduced system cost (114 mBar / 1.65 PSI @ 16 LPM)
- Low cost aluminum construction with performance comparable to copper based solutions
- Power Compact and light (3.2 kg)
- Compatible with industry accepted coolants
- Friction Stir Welded for a robust metallurgical seal and high pressure rating

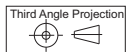
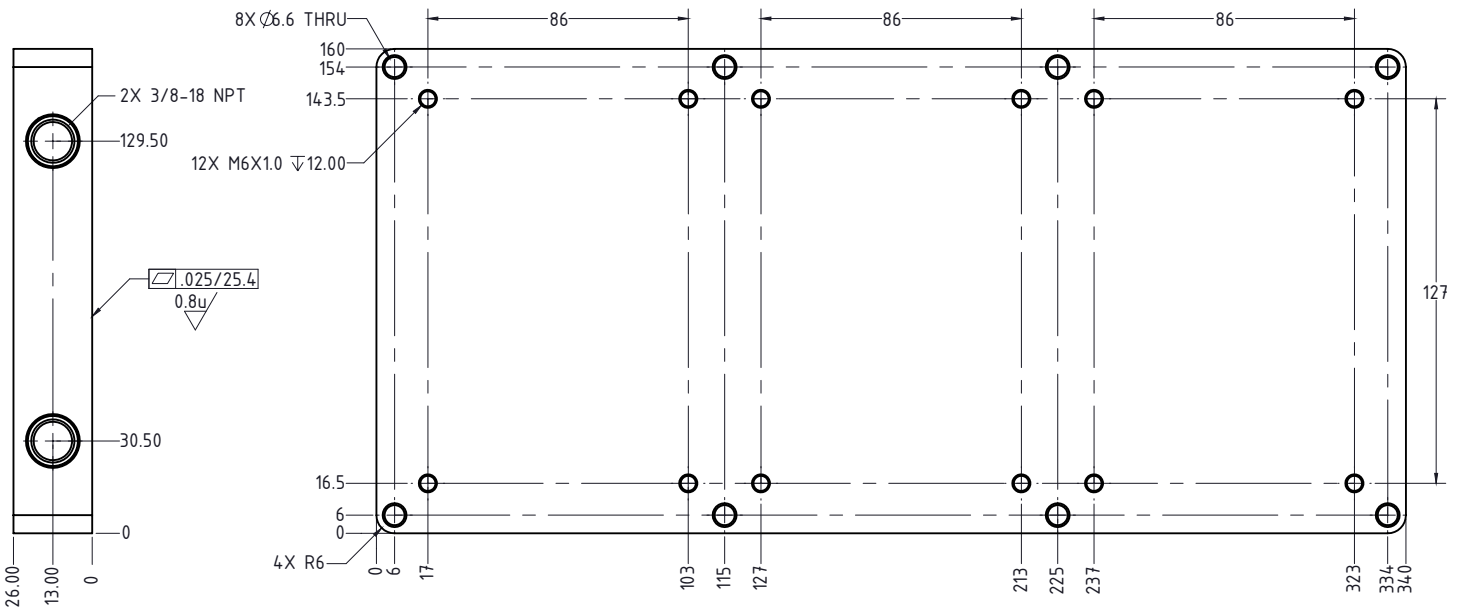
PWR-CHILL Internal Fin Technology



PERFORMANCE CURVES



MECHANICAL OUTLINE



Dimensions as shown are in MM, Tolerances ±0.13

Corporate Headquarters
MaxQ Technology, LLC
8350 S. Kyrene Road, Suite 103
Tempe, AZ 85284
United States
(877) 804-0284

For Sales Information
sales@maxq.com
(877) 804-0284 Ext. 103

For Technical Support
tech@maxq.com
(877) 804-0284 Ext. 102

Please visit our website at www.maxq.com