

HIGH PERFORMANCE Thermal Management

027-MXQ-01 Liquid Cooled Coldplate

The 027-MXQ-01 is a liquid cooled coldplate specifically designed for challenging power density applications requiring a compact and light-weight design. The advanced design of the 027-MXQ-01 allows for efficient heat transfer between the coldplate contact area and the power module base plate.

Compatible Power Module Packages

- Infineon PrimePack3™
- Fuji Electric M272

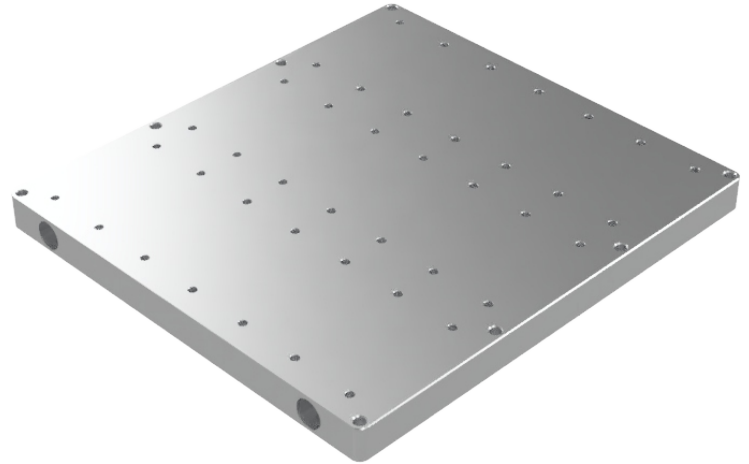
Applications

- Rail Traction Systems
- Locomotive & High Speed Trains
- Industrial Medium Voltage Drives
- Marine Thruster Systems
- Heavy Vehicle Wheel Drive Systems
- Power Transmission and Distribution
- Autonomous Vehicles
- Defense Vehicles

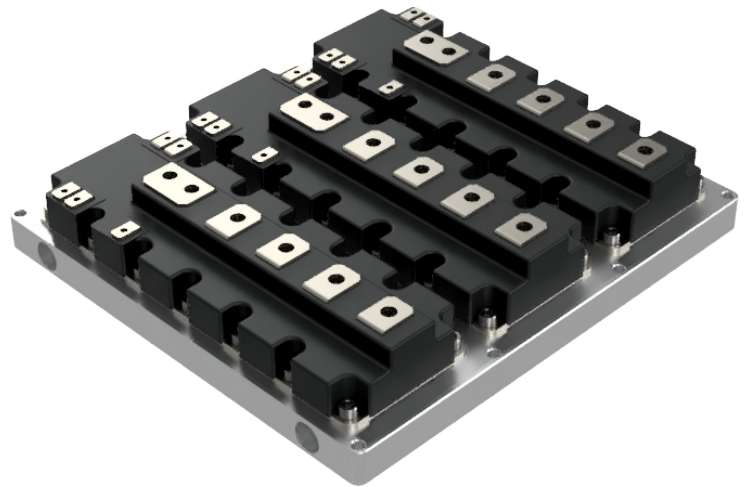
Features

- 6900 Watt heat rejection @ 20 LPM with a 27° C temp. rise from the fluid inlet to the max coldplate temperature
- Patented PWR-CHILL internal fin technology provides for a more uniform top coldplate surface temperature
- Low pressure drop for reduced system cost (586 mBar / 8.5 PSI @ 20 LPM)
- Low cost aluminum construction with performance comparable to copper based solutions
- Power Compact and light (4.0 kg)
- Compatible with industry accepted coolants
- Friction Stir Welded for a robust metallurgical seal and high pressure rating

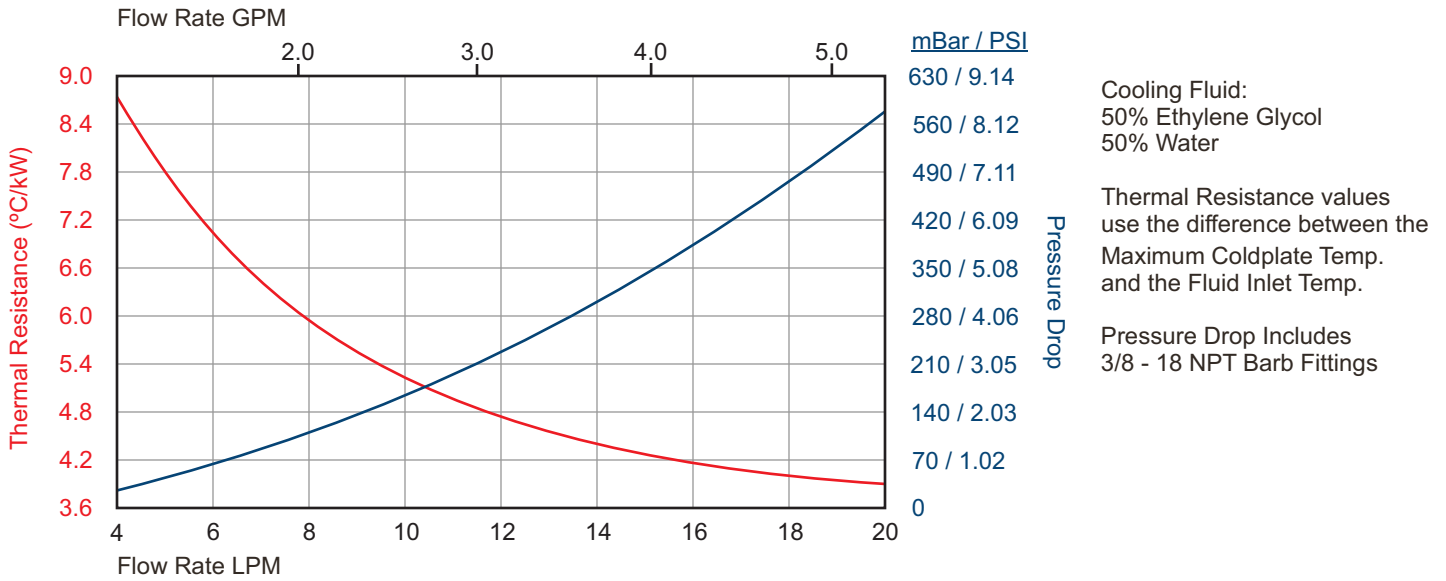
PWR-CHILL Internal Fin Technology



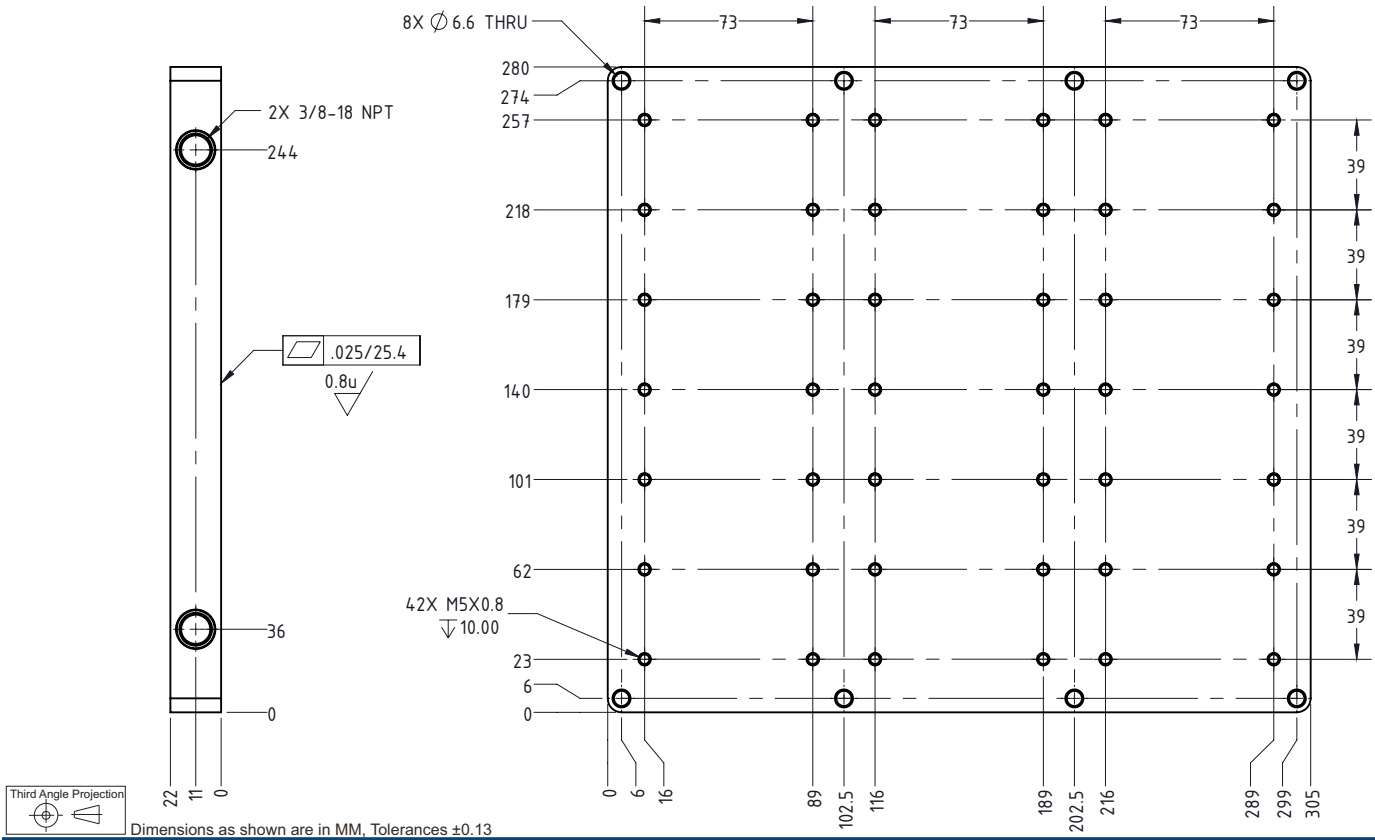
Designed to Cool Three (3) Power Modules



PERFORMANCE CURVES



MECHANICAL OUTLINE



Corporate Headquarters
MaxQ Technology, LLC
8350 S. Kyrene Road, Suite 103
Tempe, AZ 85284
United States
(877) 804-0284

For Sales Information
sales@maxq.com
(877) 804-0284 Ext. 103

For Technical Support
tech@maxq.com
(877) 804-0284 Ext. 102

Please visit our website at www.maxq.com