

## HIGH PERFORMANCE Thermal Management

### 029-MXQ-01 Liquid Cooled Coldplate

The 029-MXQ-01 is a liquid cooled coldplate specifically designed for challenging power density applications requiring a compact and light-weight design. The advanced design of the 029-MXQ-01 allows for efficient heat transfer between the coldplate contact area and the power module base plate.

#### Compatible Power Module Packages

- POWEREX Mega Power Dual™
- Mitsubishi MPD Package Type

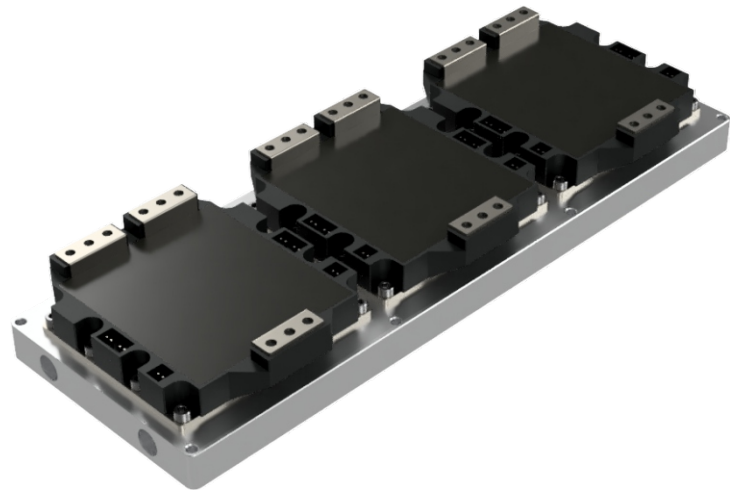
#### Applications

- Rail Traction Systems
- Locomotive & High Speed Trains
- Industrial Medium Voltage Drives
- Marine Thruster Systems
- Heavy Vehicle Wheel Drive Systems
- Power Transmission and Distribution
- Autonomous Vehicles
- Defense Vehicles

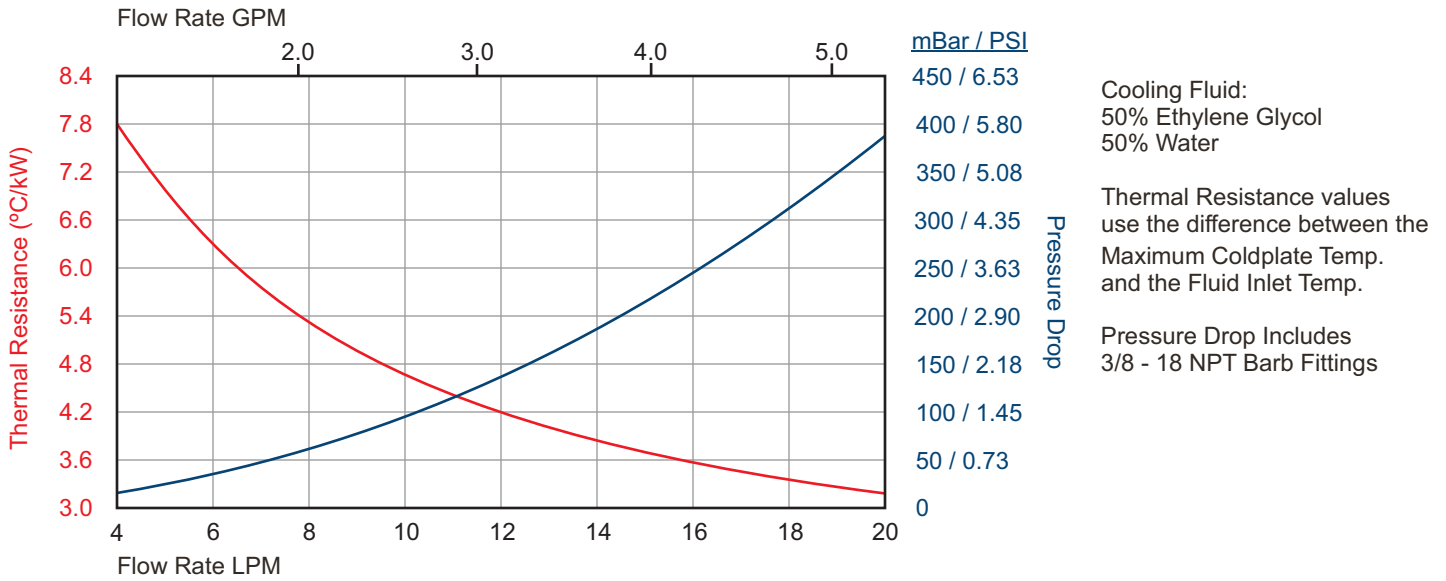
#### Features

- 8000 Watt heat rejection @ 20 LPM with a 26° C temp. rise from the fluid inlet to the max coldplate temperature
- Patented PWR-CHILL internal fin technology provides for a more uniform top coldplate surface temperature
- Low pressure drop for reduced system cost (385 mBar / 5.58 PSI @ 20 LPM)
- Low cost aluminum construction with performance comparable to copper based solutions
- Power Compact and light (4.5 kg)
- Compatible with industry accepted coolants
- Friction Stir Welded for a robust metallurgical seal and high pressure rating

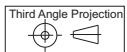
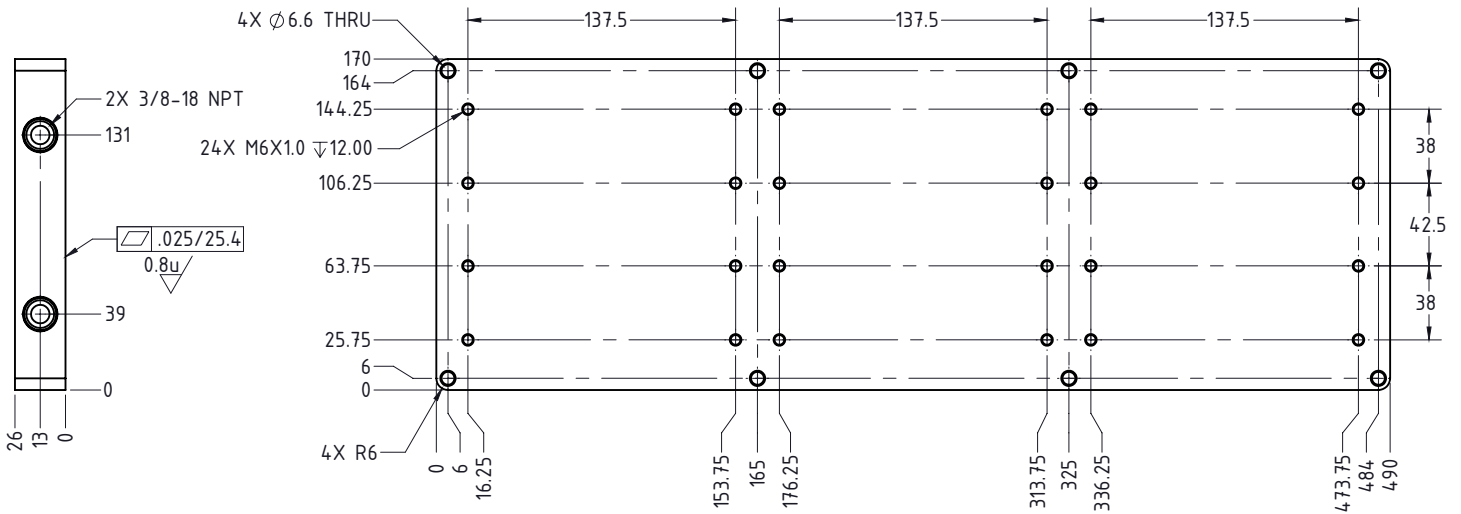
PWR-CHILL Internal Fin Technology



**PERFORMANCE CURVES**



**MECHANICAL OUTLINE**



Dimensions as shown are in MM, Tolerances ±0.13

**Corporate Headquarters**  
MaxQ Technology, LLC  
8350 S. Kyrene Road, Suite 103  
Tempe, AZ 85284  
United States  
(877) 804-0284

**For Sales Information**  
sales@maxq.com  
(877) 804-0284 Ext. 103

**For Technical Support**  
tech@maxq.com  
(877) 804-0284 Ext. 102

Please visit our website at [www.maxq.com](http://www.maxq.com)