

HIGH PERFORMANCE Thermal Management

017-MXQ-01 Liquid Cooled Coldplate

The 017-MXQ-01 is a liquid cooled coldplate specifically designed for challenging power density applications requiring a compact and light-weight design. The advanced design of the 017-MXQ-01 allows for efficient heat transfer between the coldplate contact area and the power module base plate.

Compatible Power Module Packages

- POWEREX Mega Power Dual™
- Mitsubishi MPD Package Type

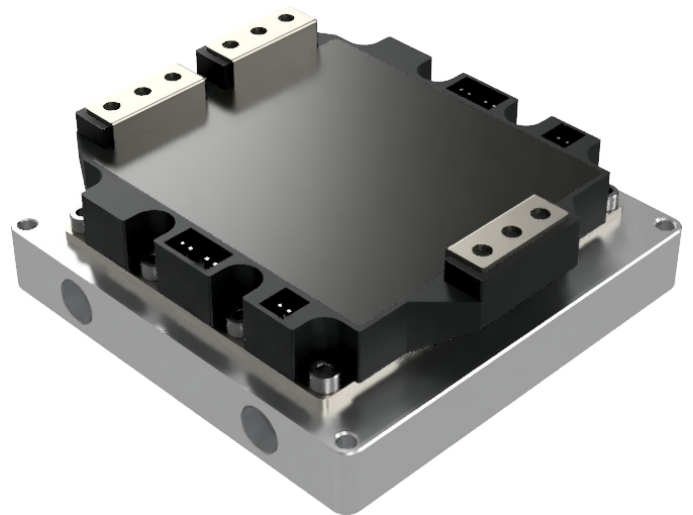
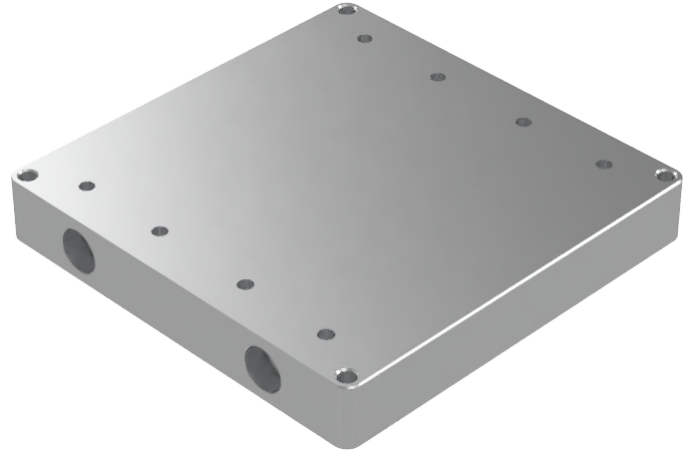
Applications

- Rail Traction Systems
- Locomotive & High Speed Trains
- Industrial Medium Voltage Drives
- Marine Thruster Systems
- Heavy Vehicle Wheel Drive Systems
- Power Transmission and Distribution
- Autonomous Vehicles
- Defense Vehicles

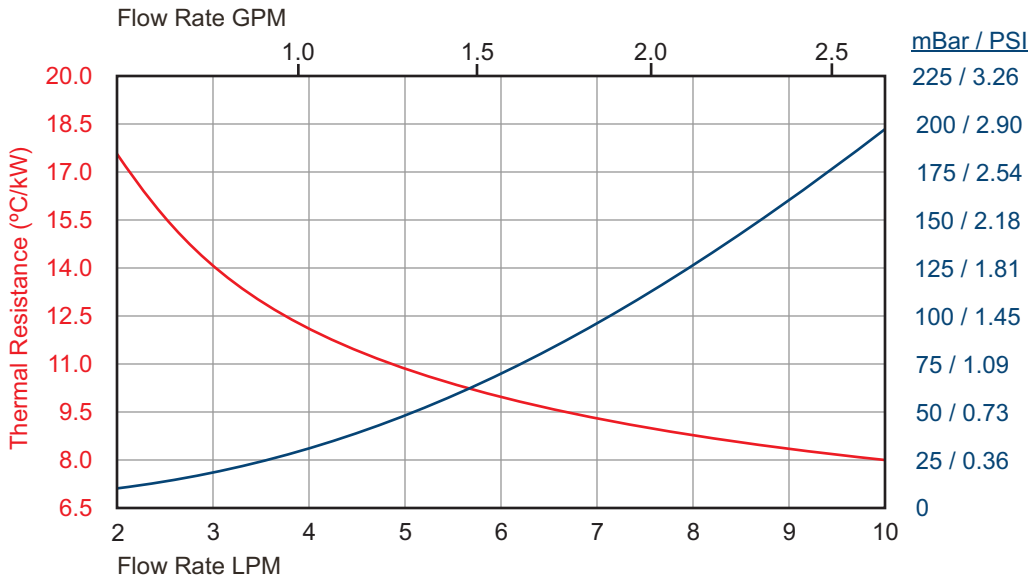
Features

- 3000 Watt heat rejection @ 10 LPM with a 24° C temp. rise from the fluid inlet to the max coldplate temperature
- Patented PWR-CHILL internal fin technology provides for a more uniform top coldplate surface temperature
- Low pressure drop for reduced system cost (197 mBar / 2.86 PSI @ 10 LPM)
- Low cost aluminum construction with performance comparable to copper based solutions
- Power Compact and light (1.6 kg)
- Compatible with industry accepted coolants
- Friction Stir Welded for a robust metallurgical seal and high pressure rating

PWR-CHILL Internal Fin Technology



PERFORMANCE CURVES



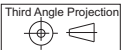
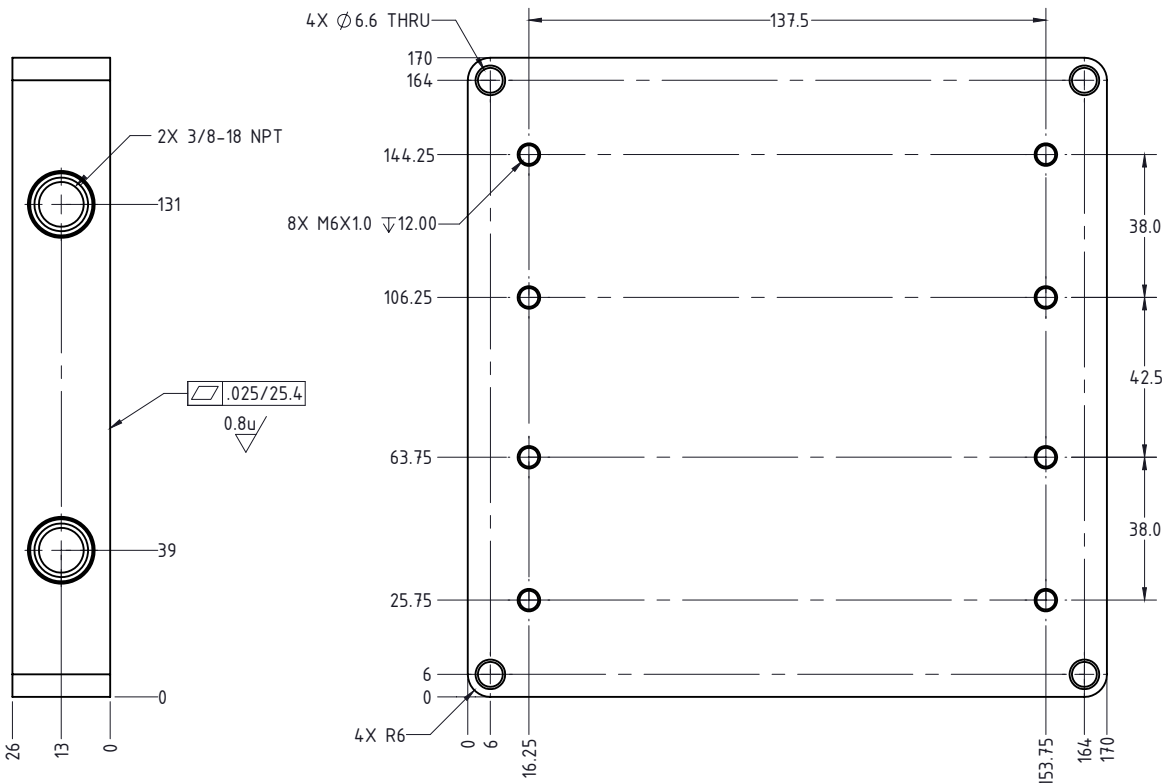
Cooling Fluid:
50% Ethylene Glycol
50% Water

Thermal Resistance values use the difference between the Maximum Coldplate Temp. and the Fluid Inlet Temp.

Pressure Drop Includes 3/8 - 18 NPT Barb Fittings

Pressure Drop

MECHANICAL OUTLINE



Dimensions as shown are in MM, Tolerances ±0.13

Corporate Headquarters
MaxQ Technology, LLC
8350 S. Kyrene Road, Suite 103
Tempe, AZ 85284
United States
(877) 804-0284

For Sales Information
sales@maxq.com
(877) 804-0284 Ext. 103

For Technical Support
tech@maxq.com
(877) 804-0284 Ext. 102

Please visit our website at www.maxq.com